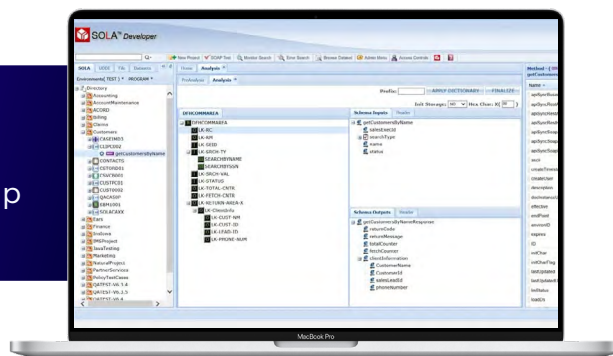


# Akana Sola

Modernize Your Mainframe in Minutes, Not Months

Akana Sola Mainframe APIs make it possible to go from mainframe to cloud in minutes. And you can do it without sacrificing your mainframe, racking up costs, or taking unnecessary risks.



## Save Money



Sola customers regularly achieve **20x ROI** – with one customer saving \$43M+ over two years.

## Move Fast



Mainframe modernization projects can take months - or years. With Sola, it takes **minutes**.

## Integrate Everything



Connect your mainframe with modern systems using fully governed and secured APIs, **no specialized skills required**.

## A Common Dilemma on Mainframe

Mainframes are the backbone of enterprise systems around the world. But connecting mainframes with modern systems can be time consuming, and ultimately costly. The alternative, moving existing applications and data off the mainframe, can add unacceptable levels of risk. Worse yet, neither option guarantees an immediate return on the large investment required.

This leaves enterprises who want to harness the hard-earned data in their mainframes looking for a more cost-effective way to modernize, without the added risk.

That's where Akana Sola comes in.

## An Easy Path to Mainframe Modernization

Akana Sola provides an efficient, simple, reliable, and fast way of integrating legacy mainframe applications and data into newer, more modern, applications by exposing them as fully governed and secured APIs.

This enables the simple incorporation of long-established business rules without writing code, and without risk to your business, all while using industry best practices.

The best part? Compared to traditional modernization efforts, Sola doesn't require specialized skills, and allows you to connect your mainframe to modern systems **in minutes**

# Why Choose Akana Sola?

## Fast Mainframe Modernization

Mainframe modernization projects are labor intensive, and can take months upon months to see an ROI. With Sola, APIs can be developed, deployed, and secured from your mainframe programs in a matter of minutes – the fastest on the market hands down.

## User-Friendly, No Code UI

With Sola there is no need to write any new code or scripts. Teams can use the browser-based, drag and drop development environment to quickly create and then connect APIs to consume or expose data to your mainframe.

## Proven Stability at Scale

Sola runs some of the largest mainframe API solutions on Wall Street, with single customers regularly running in excess of 100,000,000 API requests per day. No production outages in over 15 years.

## Unlock the Power of Your Mainframe

Sola enables mainframes to both expose and consume APIs. It bridges the gap between mainframe applications and data, and the distributed world, leveraging decades of investment. Sola accomplishes this without any additional coding or cross platform skills training.

## And Much More

The power of Sola doesn't stop there. Set up a demo with our team today to see what Sola can do for you.

## Key Features and Functionalities

- Expose and consume SOAP/REST APIs from multiple sources: COMMAREA, CONTAINER, BMS3270, IMS transactions and subroutines, batch programs, and DB2 stored procedures
- Easily establish REST access to current APIs or build REST APIs from scratch with our REST Designer

- Supports and produces SWAGGER (Open API), RAML, and WSDL
- XML and JSON support for input and output payloads
- Integrates with ChangeMan and Endeavor management systems
- Supports HTTP, HTTPS (SSL or AT-TLS), and MQ as transport layers
- Handles industry standard AuthN/AuthZ protocols (UserId/Pswd, OAuth, OpenID, SAML, Kerberos, etc.)
- Standards based (XML, JSON, HTTP, SOAP, and much more)
- Online and Batch capable
- Integrated testing facilities
- Global Dictionary for easy translation of abstruse COBOL variable names

## Ready to See Akana Sola in Action?

To book a demo with our team, contact us today at [www.akana.com/contact-us](http://www.akana.com/contact-us), or reach out to your Akana account manager for more information.

